

DOOR

INSTALLATION GUIDE



Place Upstands 250mm from the ends of the Panel.



Place Panel into Upstands.

Tel: 0844 84 8 4166
Fax: 0844 848 4188
email:
info@reuseawall.com
website:
www.reuseawall.com

REUSE-A-WALL Internal Hoarding Systems
A Trading Division of Blok N Mesh
Registered office:
Leytonstone House, Leytonstone, London E11 1GA
Company Registration Number 2850152.

Copyright Blok N Mesh 2017

DOOR

INSTALLATION GUIDE



Place H Section on the Panel.



Place Door into H Section – Leave door open.

Tel: 0844 84 8 4166
Fax: 0844 848 4188
email:
info@reuseawall.com
website:
www.reuseawall.com

REUSE-A-WALL Internal Hoarding Systems
A Trading Division of Blok N Mesh
Registered office:
Leytonstone House, Leytonstone, London E11 1GA
Company Registration Number 2850152.

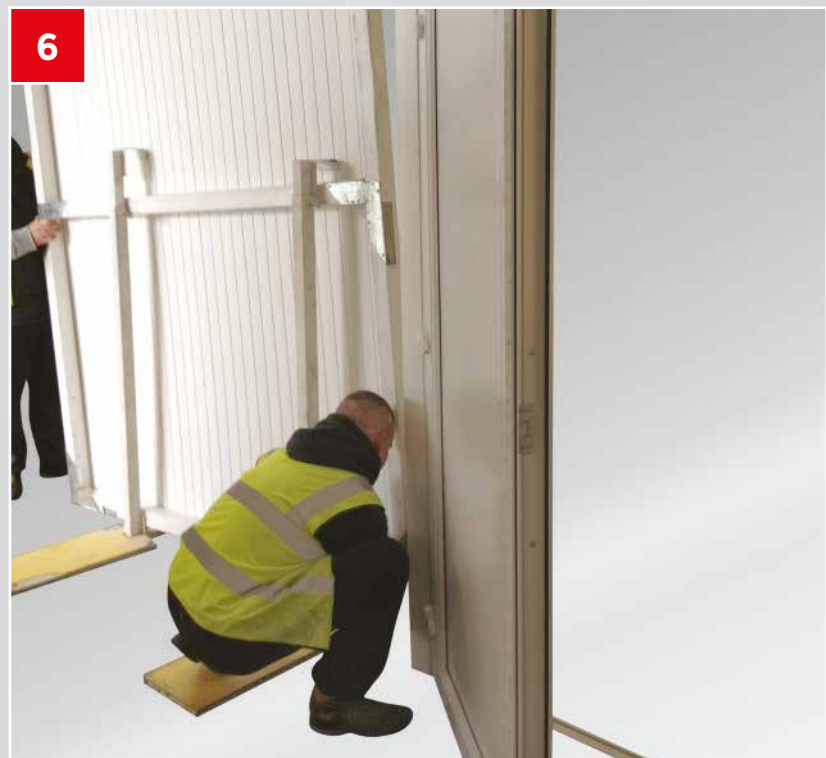
Copyright Blok N Mesh 2017

DOOR

INSTALLATION GUIDE



Place H Section on to Door.



Place Upstands in place as above and slide Panel into H Section.

Tel: 0844 84 8 4166
Fax: 0844 848 4188
email:
info@reuseawall.com
website:
www.reuseawall.com

REUSE-A-WALL Internal Hoarding Systems
A Trading Division of Blok N Mesh
Registered office:
Leytonstone House, Leytonstone, London E11 1GA
Company Registration Number 2850152.

Copyright Blok N Mesh 2017

DOOR

INSTALLATION GUIDE

7



Finished result.

Note: To ensure door closes fully, please ensure that the units are leveled up and square. Use packers where required.

Tel: 0844 84 8 4166
Fax: 0844 848 4188
email:
info@reuseawall.com
website:
www.reuseawall.com